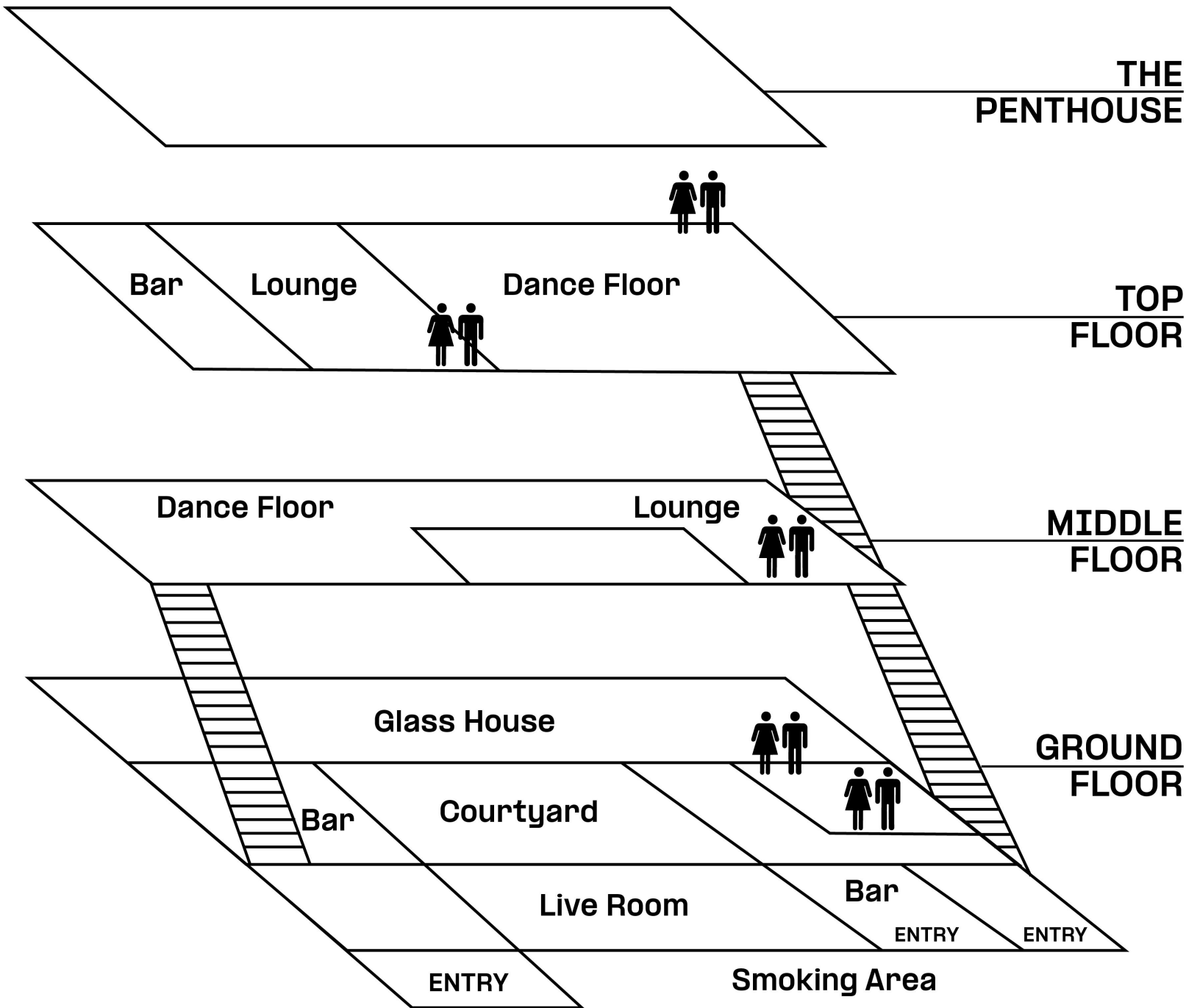


ELECTROMERKZ



7, TORRENS STREET

COURTYARD

This generous space is the heart of our home. It's light and airy with a glass roof and original cobbled floor.

Includes expansive ceiling height, a cocktail bar running the full width of the room and many living plants, which gives an unique experience.

The Courtyard is perfect for relaxed drinking, dining and socialising. We can package the Courtyard with the Glass House to increase the capacity of your event.

These areas are supported by our kitchen which can produce a huge range of dishes from wedding feasts, to party buffets and is experienced at catering for those with dietary restrictions.

* CAPACITY

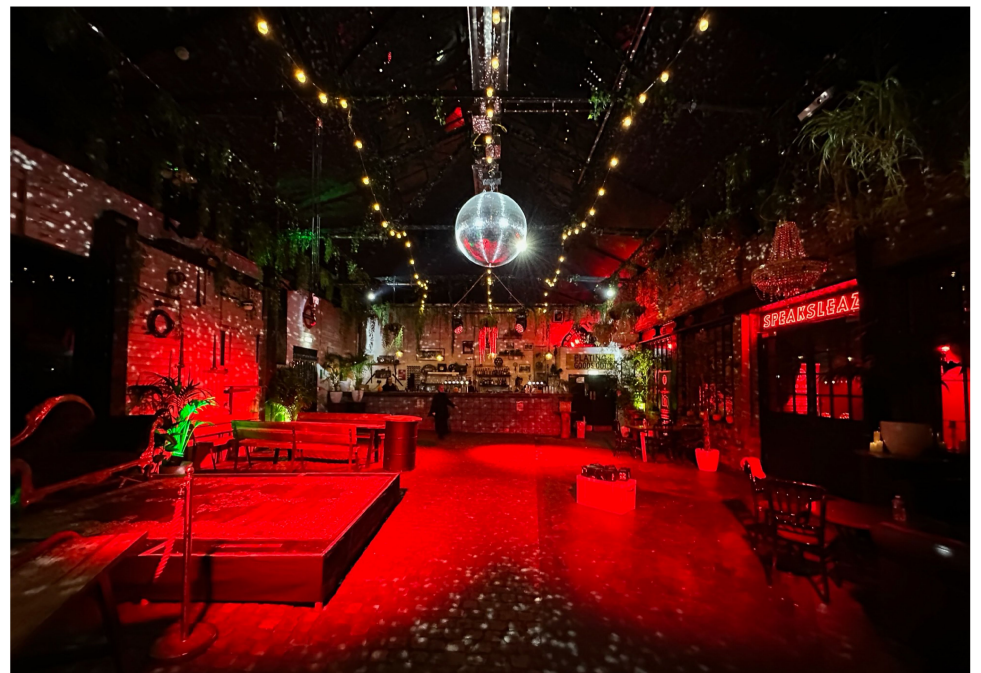
Contact our team for more information

* SPACE

Size: 9.8m W x 16.4m D x 4.6m H
Disabled Access

* FOOD & DRINK

Professional Kitchen
Halal / Kosher / Vegan Catering
Fully licenced bar



GLASS HOUSE

Leading off the Courtyard is the Glass House. This versatile room has hosted events as varied as magic shows through stand up comedy and club nights. This room loves to be flexible and with the ability to pair with the courtyard, opens up an array of possibilities.

* CAPACITY

250 Standing

120 Theatre Seating

100 Dining / Cabaret

* SPACE

Disabled Access

Size: 6.9m W x 16.4m D x 3.1m H

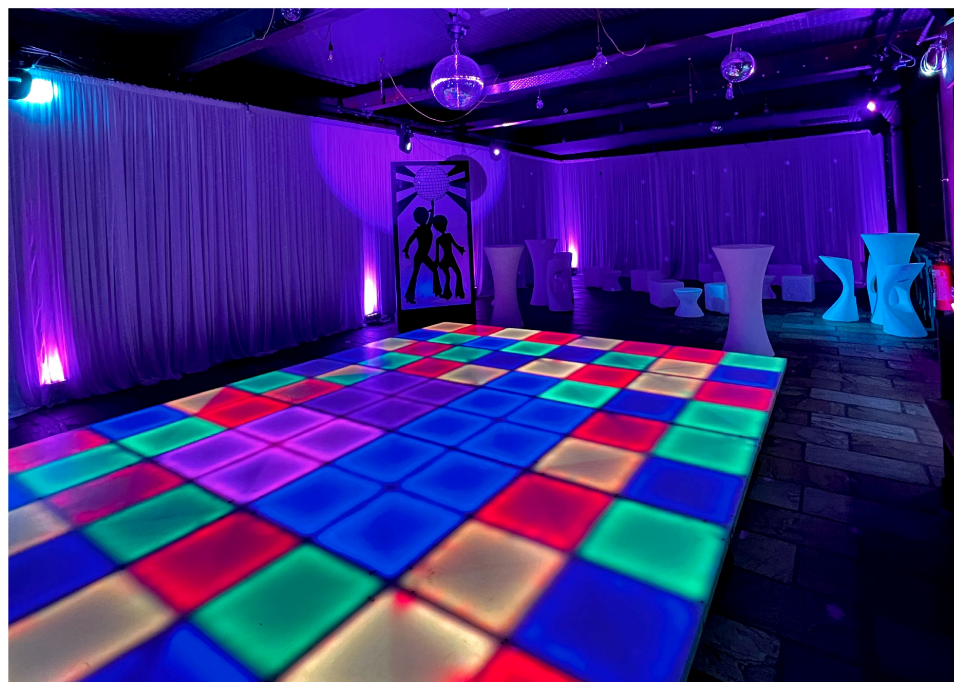
113.16 Sqm

* FOOD & DRINK

Professional Kitchen

Halal / Kosher / Vegan Catering

Fully licenced bar



LIVE ROOM

The Live Room is our main ground floor live space. Boasting a high stage it's perfect for live gigs as well as being an excellent space for DJs. As flexibility is our middle name, we have also used this room for screening events and it has a chameleon quality with the addition of a little decor. To top it off there's a very cute bar just outside with enough space for people to chat and catch up over a cool beer.

The Live Room is available exclusively and has the capacity to be completely separate from the rest of the ground floor having its own access and facilities all of which are fully accessible.

* CAPACITY

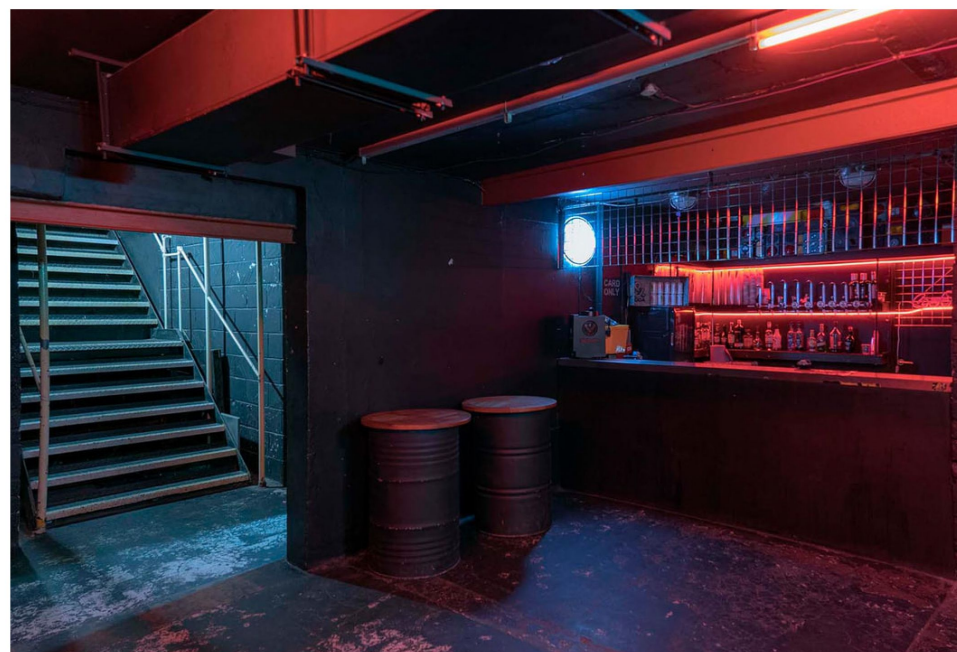
250 Standing
100 Theatre Seating
70 Dining / Cabaret

* SPACE

Disabled Access
With stage: 6.5m W x 9.2m D x 4m H
w/o stage: 6.5m W x 10.30m D x 4m H
Stage area: 6.5m W x 3.4m D x 3.1m H
w/o stage 6.5m W x 2.4m D x 3.1m H

LICENSING

A joining bar
Licensed until 5am
Licence extension available



MIDDLE FLOOR

The Middle floor is a super-cool self-contained night-club space. It features a large dance floor with a separate bar and chill out seating space.

As with all our spaces, we aim for flexibility and can convert to cabaret seating, theatre style or raving use. This space is perfect for music-led dancing and fun.

The dance floor has a dedicated DJ booth, raised to command the room and the PA and lights are included as standard.

* CAPACITY

250 Standing

135 Theatre Seating

100 Dining / Cabaret

* SPACE

6.7m W x 17.4m D

LP 2.6m H / HP 3.2m H

+

Toilet Facilities

* LICENSING

A joining bar and seating area

Licensed until 5am

Licence extension available



TOP FLOOR

The Top Floor is our prime nightclub and largest live music space. With a raised stage that can host both DJs and live acts, and a dedicated backstage area, both clubs and gigs are equally at home.

Including dedicated sound and light tech stations and an impressive lighting rig to suit all events.

If you need a brief break to get your breath back, then there's a seating area at one end of the dance floor. And that's not all, we also have a separate bar, licensed until 5am, and a seating area outside the dancefloor for more leisurely catching up and socialising.

* CAPACITY

350 Standing

150 Theatre Seating

115 Dining / Cabaret

* SPACE

7.1m W x 18m D x 3.4m H

Stage: 6m W x 5.6M D x 2.1m (LP) H

+ Backstage Area

+ Toilet Facilities

* LICENSING

A joining bar and seating area

Licensed until 5am

Licence extension available



THE PENTHOUSE

Right at the top of the building is a vast breathtaking blank canvas space. The Studio is lined on both sides with large high windows to make the most of all available natural light.

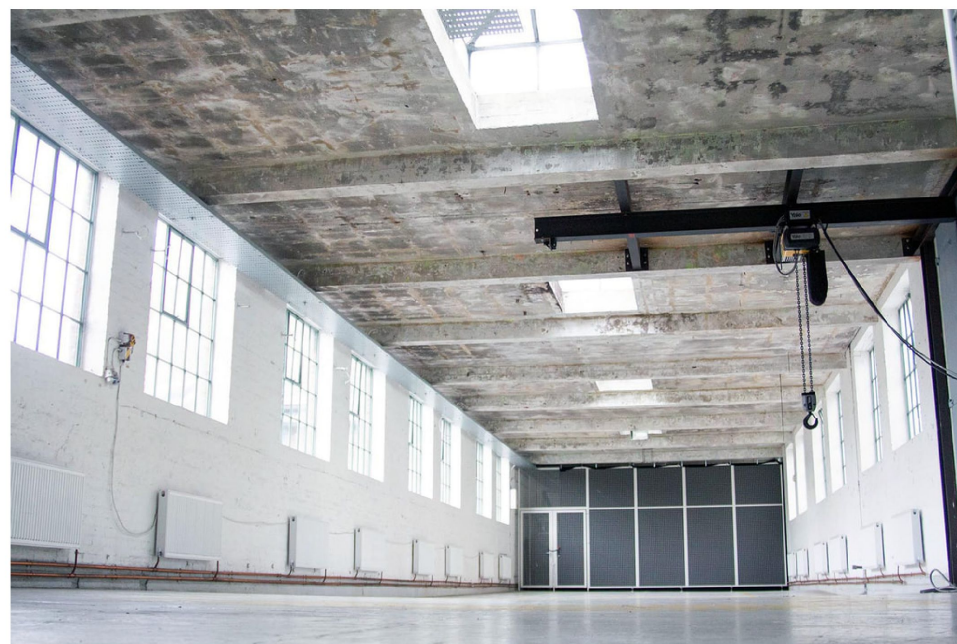
Perfect for photoshoots, exhibitions and workshops.

* CAPACITY

Contact our team for more information

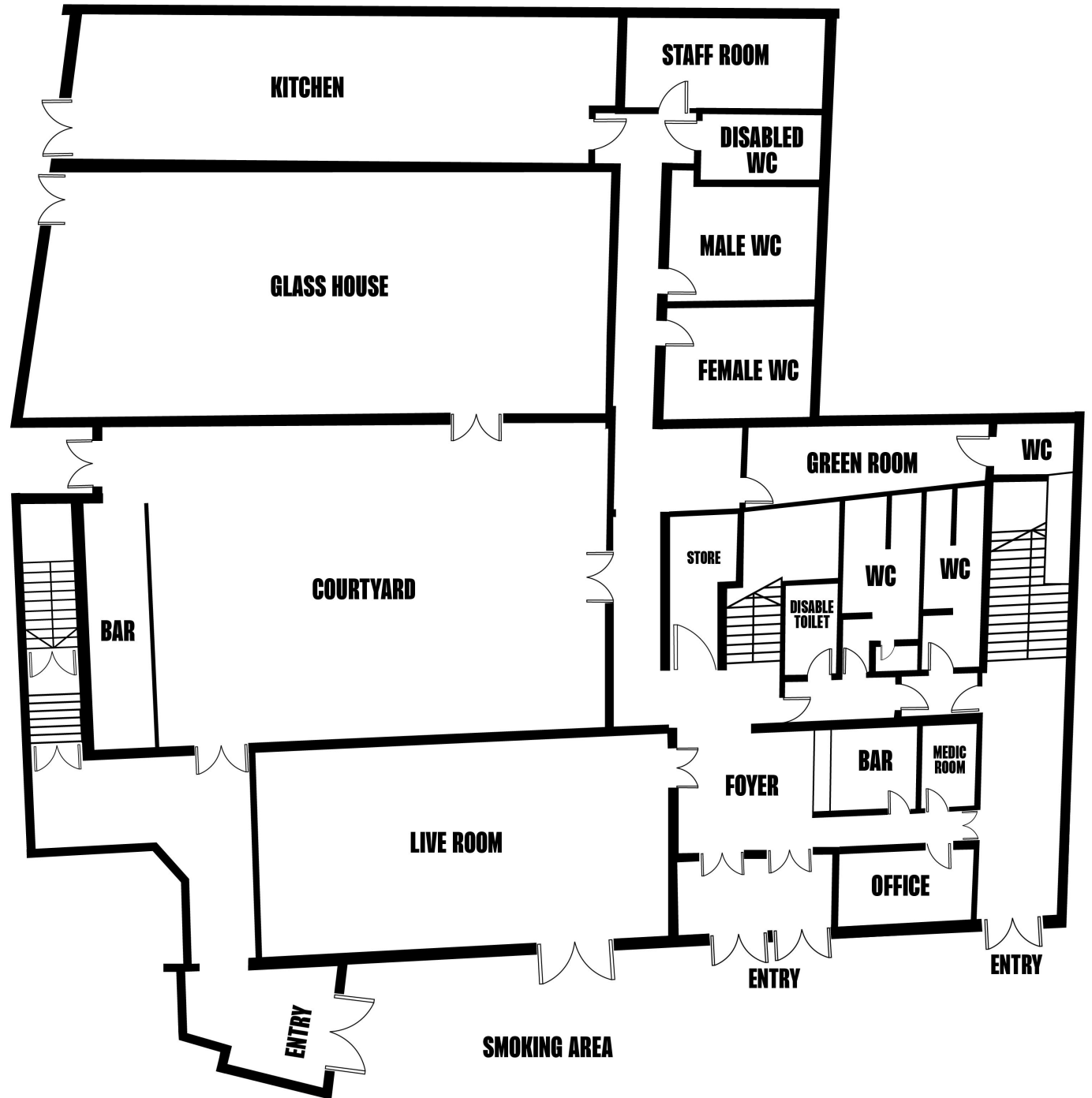
* SPACE

7.35m W x 30m D x 3.7m H



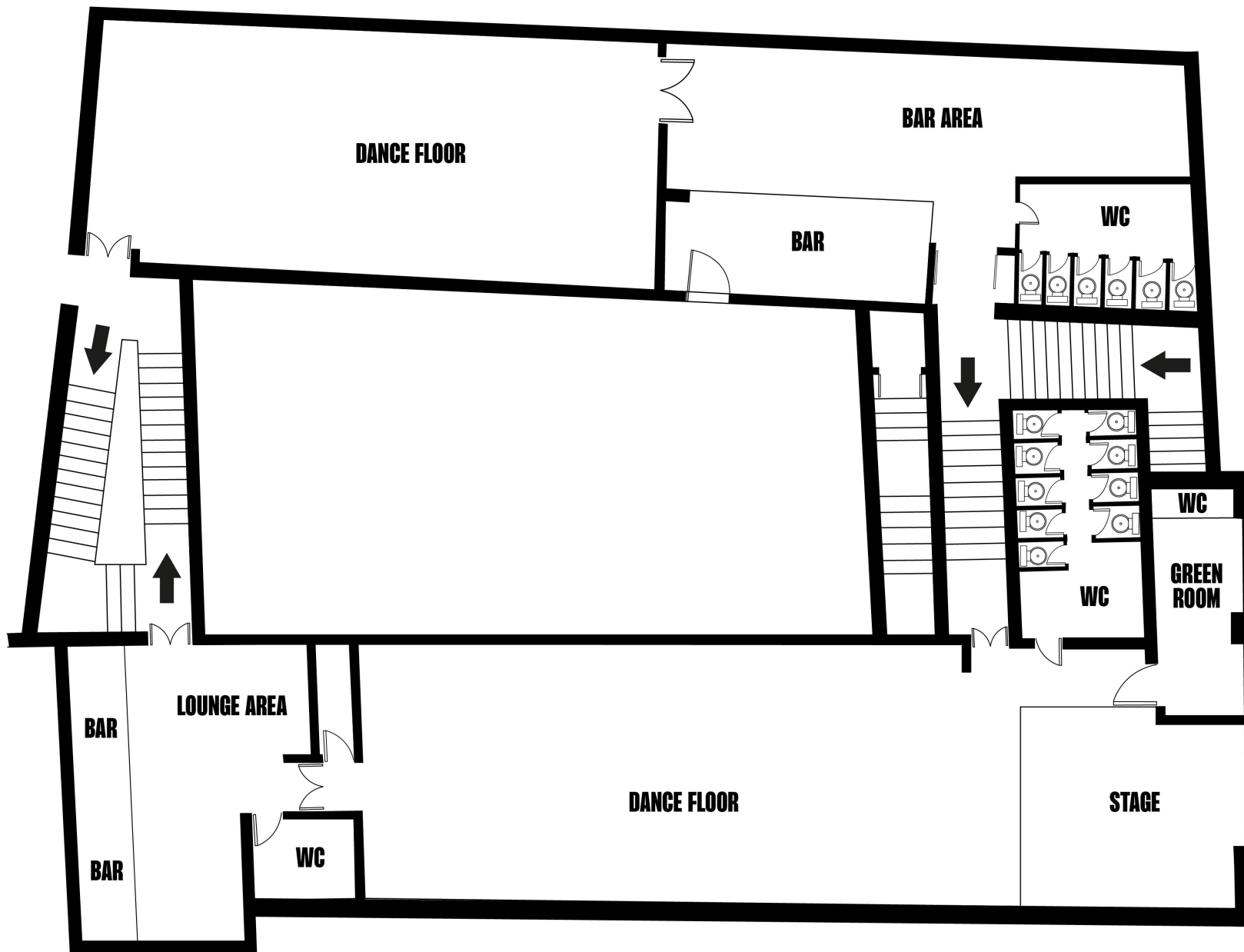
FLOOR PLAN 1

Ground Floor



FLOOR PLAN 2

Middle & Top Floor



FLOOR PLAN 3

The Penthouse

